



 Mitsubishi Corporation RtM International Pte. Ltd.

Address: 3 Temasek Avenue #32-01, Centennial Tower, Singapore 039190

Tel: +65-6235-7372

Fax: +65-6235-5342

Email: rtmi-info@org.mitsubishicorp.com

Co. Reg. No. 201230103M **ABN** 22 609 587 715

<https://global.mitsubishicorptm.com/>

November 10, 2023

Company Profile



EVOLVING INTO A CUSTOMER- CENTRIC BUSINESS GROUP



Vineet Kohli
President & Chief Executive Officer

Mitsubishi Corporation RtM International (RtM International) is the global headquarters for the Metals and Mineral Resources Trading business of Mitsubishi Corporation (MC).

Since its establishment in 2013, we have steadily imprinted our global presence within the industry by offering tailor-made trading solutions to our partners. Our strength lies in our creative approach to meet customers' needs by fully leveraging our market intelligence, human capital, MC's upstream assets, and access to MC's global network in over 90 countries and across virtually every industry.

RtM, standing for Resource to Market, symbolizes our genuine will and commitment to the sustainable development of society by meeting the market needs for a stable supply of quality minerals and metal resources.

Moving forward, as RtM International enters a new decade, we will continue to evolve our business portfolio to address demands from decarbonization, electrification and circular economy. The global green focus has contributed to wide ranging advancements in mining, smelting and metallurgical recycling technologies, and we are excited by the new opportunities these changes will bring for both our business and our customers.

Corporate Responsibility to Society

The Three Corporate Principles are the foundation of the vision and strategy for our commitment to corporate social responsibility.

Corporate Responsibility to Society

"Shoki Hoko"

Striving to enrich society, both materially and spiritually, while contributing towards the preservation of the global environment.

Integrity and Fairness

"Shoji Komei"

Maintaining principles of transparency and openness, conducting business with integrity and fairness.

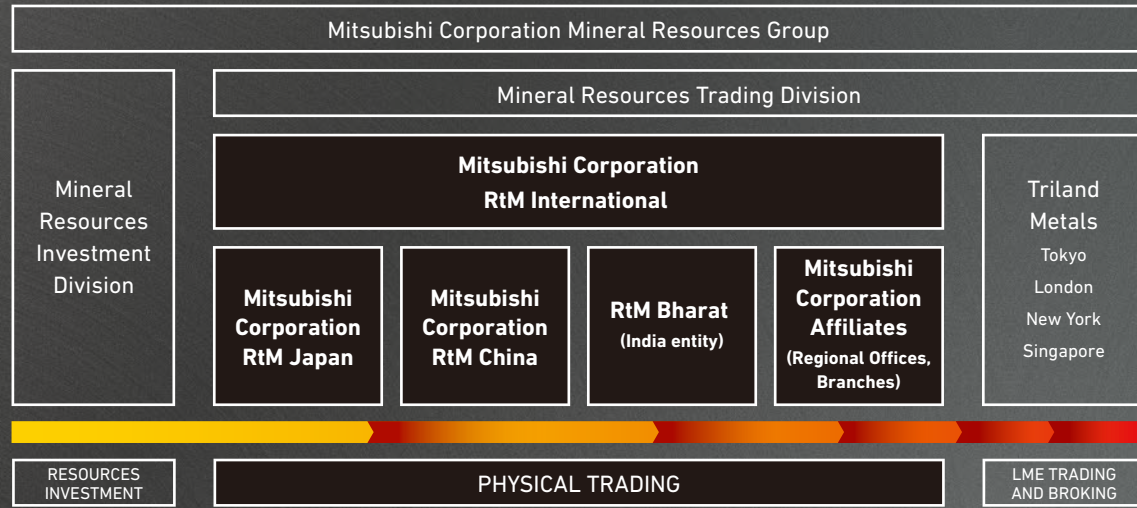
Global Understanding through Business

"Ritsugyo Boeki"

Expanding business, based on an all-encompassing global perspective.

(The modern day interpretation of the Three Corporate Principles, as agreed on at the Mitsubishi Kinyokai meeting of the companies that constitute the so-called Mitsubishi group in January 2001.)

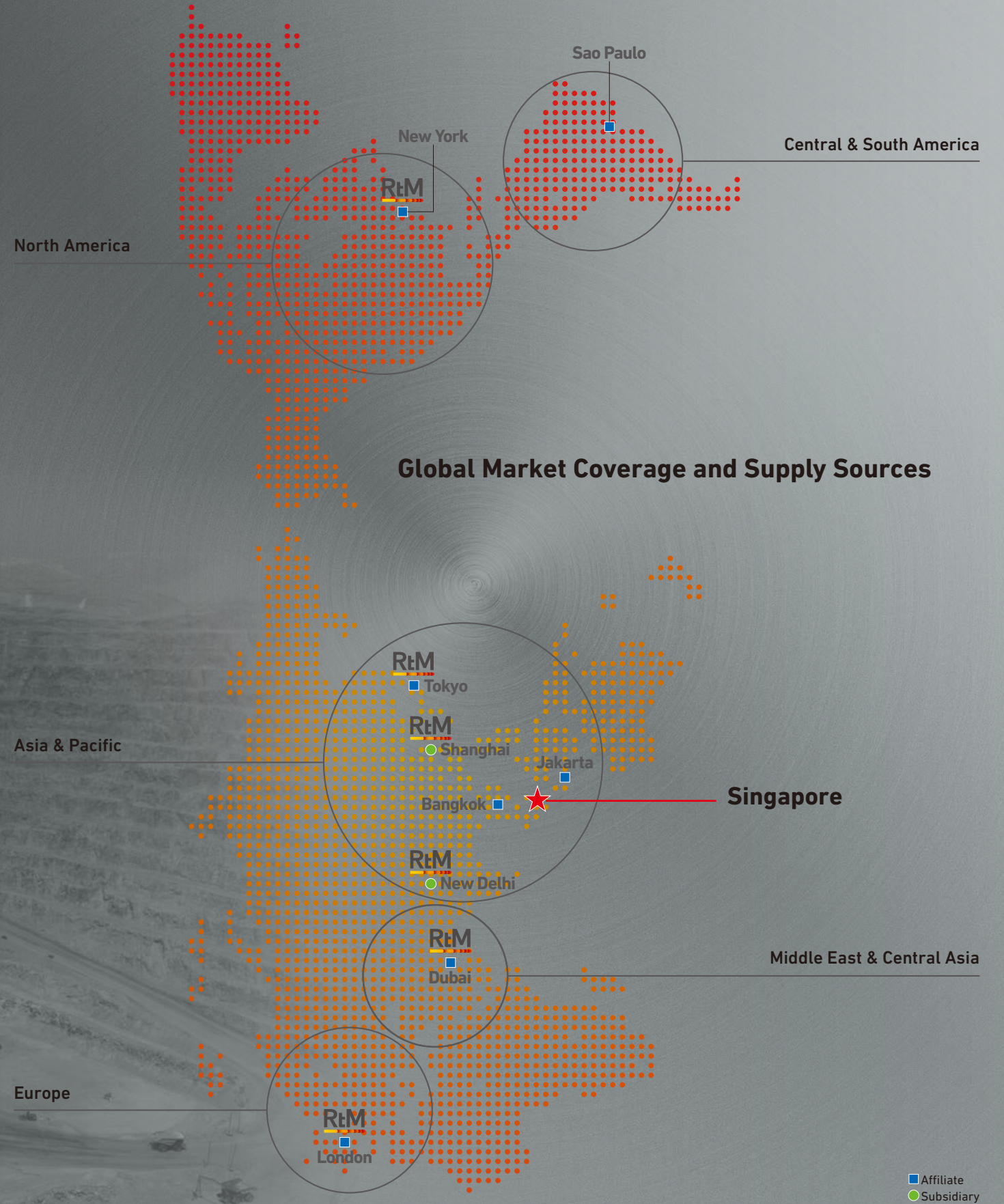
Our Metal and Mineral Resources Business



Our Main Products and Business Solutions



Global Market Coverage and Supply Sources



Resource to Market

Suppliers' needs



Our value proposition



Sustainability

Empowered by our worldwide assets and established partnerships throughout the mineral and metal supply chain, we provide ideal delivery and financing solutions for your operations.

Market Intelligence

You can rely on the customized market intelligence services that are based on our proven track record, in-depth market analysis, as well as industry-specific reports that are supported by updated market commentaries from around the world.

Professionalism

Our industry specialists and heritage as a global trading company provide you with a synergy of professionalism and reliable business conduct that assures premium services to meet the most complex needs of our partners.

Global Network

Our extensive network, comprising local offices and affiliates in over 90 countries, enables round-the-clock access to both international and regional market insights and services, providing accurate information and timely business solutions.

Customers' needs

